



INSPIRING THE NEXT STEPS FOR THE EARLY WARNING SYSTEM DATABASE

The *Early Warning System* exchanges information, advice, tools and resources with communities, and the organizations supporting them, about projects proposed at major development institutions. To increase the community's leverage to respond and influence the project, proposed project information ideally reaches communities before funding has been decided.

The *Early Warning System* is a growing collective of groups around the world, that summarizes and analyzes each project and conducts outreach through a wide global network. Partners of the *Early Warning System* may support a community-led response by: mobilizing a community-led research process; advising on communications with the governments, development finance institutions and investors; and filing formal complaints, among other strategies.

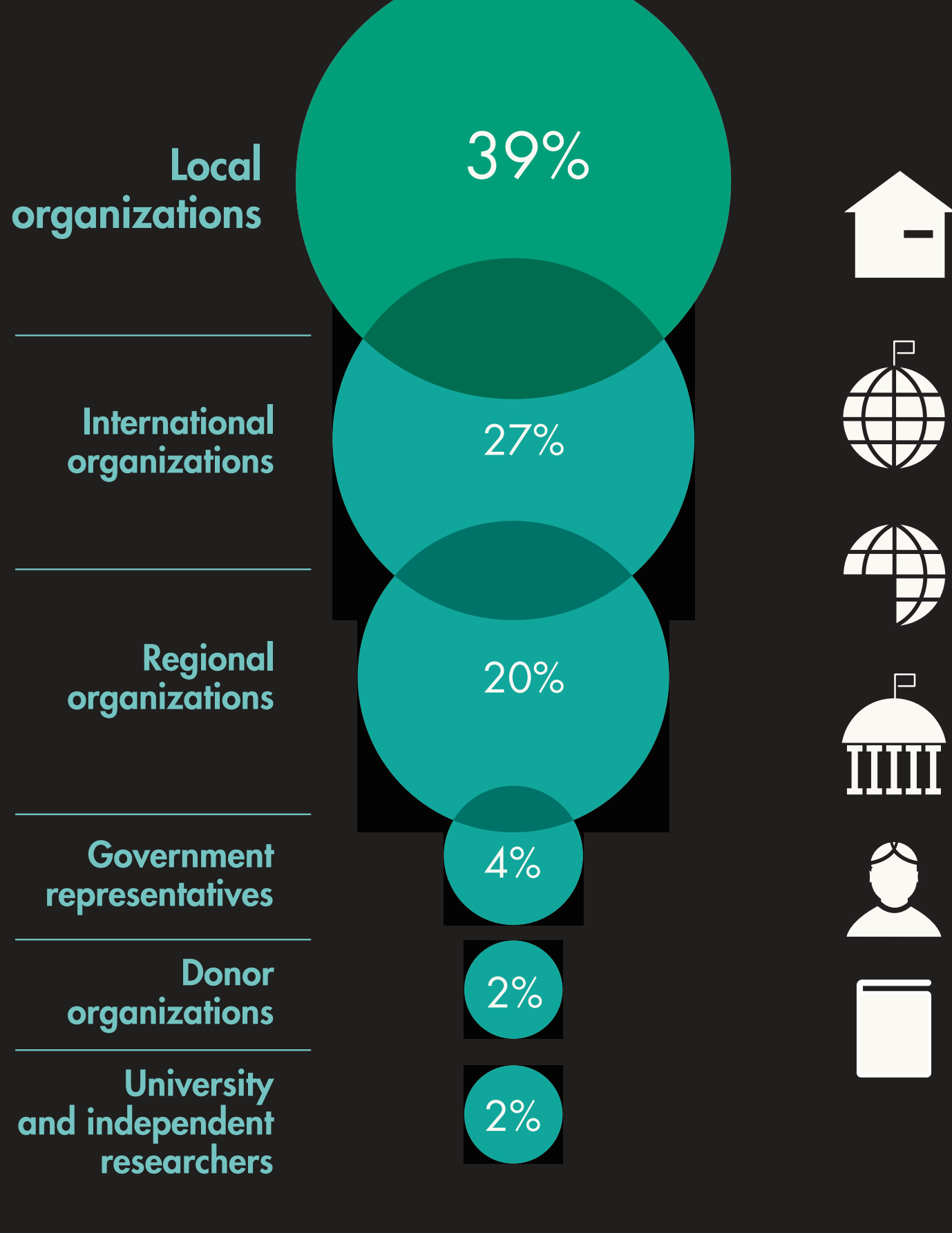
To do all this, the *Early Warning System* includes a Database which uses the software Nyali to collect and standardize thousands of projects proposed each year. The *Early Warning System Database* also provides development trends analyses by geography, sector, development finance institution, private actors and community-led response. The *Early Warning System Database* tracks the disclosure practices at development institutions to advocate for improved access to information for communities.

While the vast majority of the *Early Warning System* work is offline, the *Early Warning System Database* is currently available to groups who are committed to conducting outreach in their countries and potentially reinforcing a community-led response.

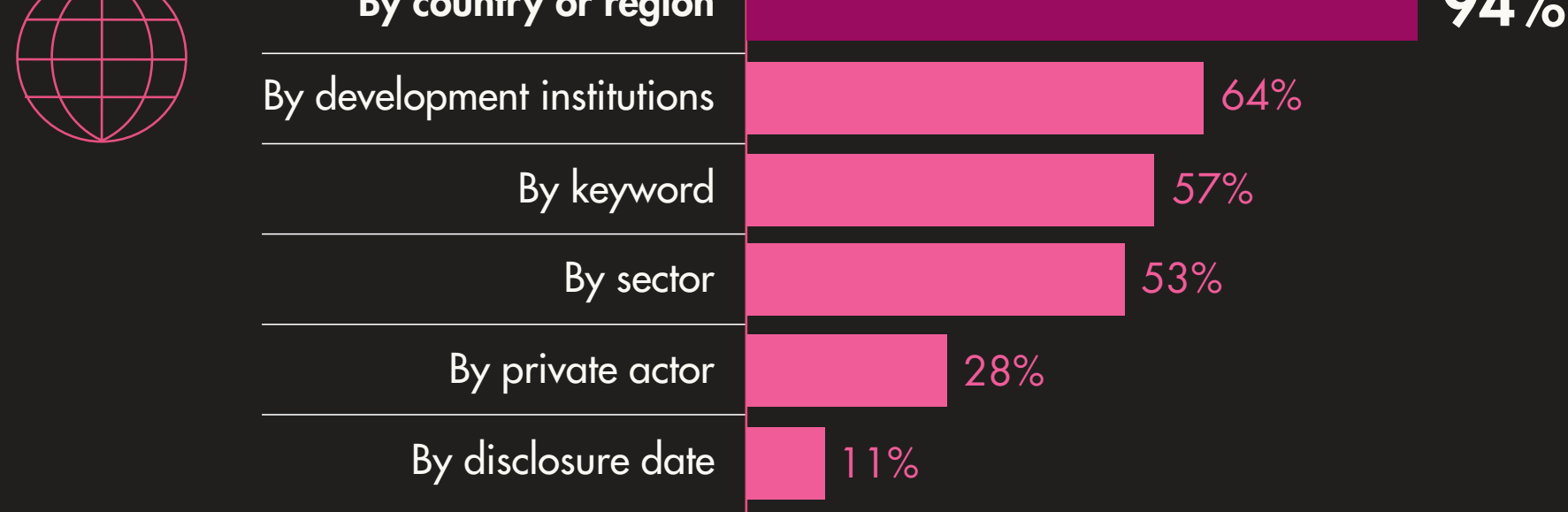
To better understand how Early Warning System Database is used by partners and to identify potential enhancements, in 2018 online and in person demonstrations of the Early Warning System Database were conducted with 108 organizations. After the demonstration, feedback was given directly and participants were invited to complete a short survey.

Their feedback and the survey results are inspiring the next steps for the *Early Warning System*!

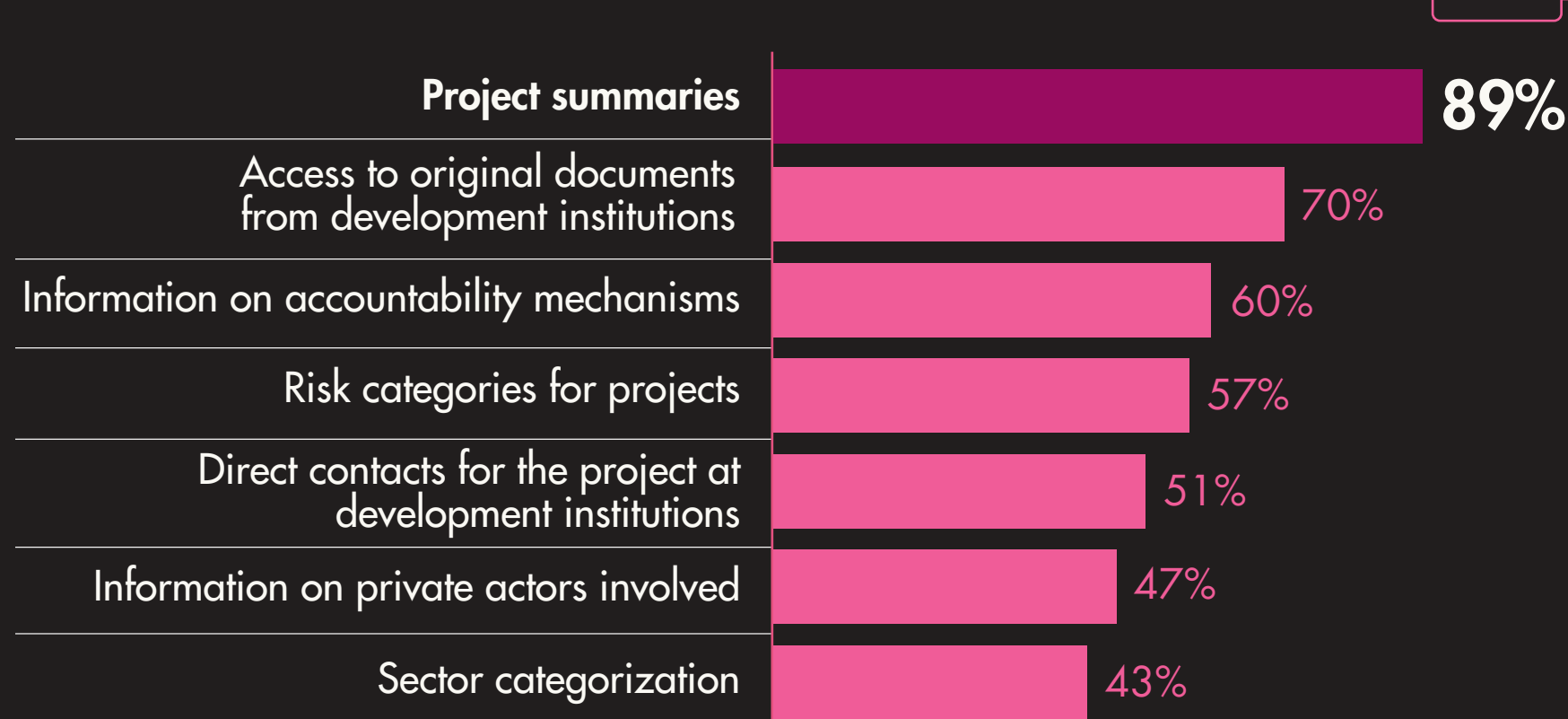
Who participated in the survey:



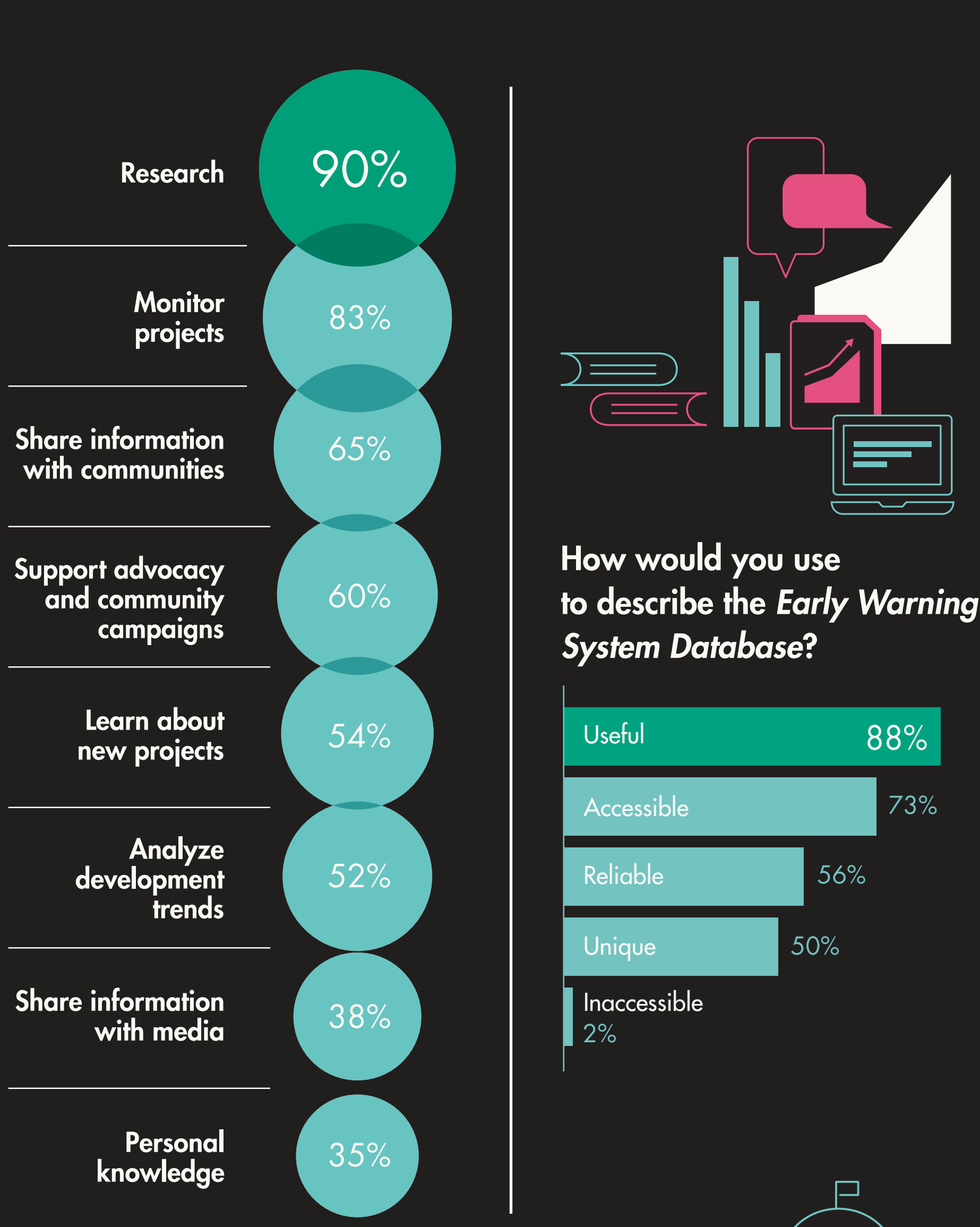
Primarily, how were projects searched?



Which content was most useful?



How would you use the Early Warning System Database?



Recommendations

Advocacy

- Include a space for community monitoring reports and their campaign information
- Highlight the most controversial projects and emblematic campaigns to increase collective action
- Include more information about the communities affected and how to contact them
- Include the name of some organizations that could support communities by providing more information about the project or helping us with our campaign

Functionality

- Include data visualizations for the search results
- Include a way for the user to add information to the project summary - including additional documentation and community research and campaigns
- Create a way for users to file access to information requests with the development institutions
- Include information if complaints were filed at an accountability mechanisms
- The interface should have more interesting design
- Provide an explanation of what the different risk ratings mean
- Show the projects on a map
- Link similar projects together
- Link projects with the same private actors
- Create an API to connect with other relevant databases

Scope

- Expand the number of development banks and financiers to cover all forms of projects
- Create a platform for community and stakeholder engagement and advocacy for accountability, implementation, and compliance
- Include projects financed by the major national development banks including Brazil and China
- Provide the contact information for the private actors involved
- Include projects financed only by private companies
- Include a space for governments and private actors to respond to information concerning them
- Translate project summaries into as many languages as possible, ideally without relying on google translate
- On a timeline, give detailed information at different stages of implementation of the project
- Provide links to additional media, especially local and national, with more information about the national context and the communities affected
- Disseminate the project information to the larger public beyond the Early Warning System partners and communities affected